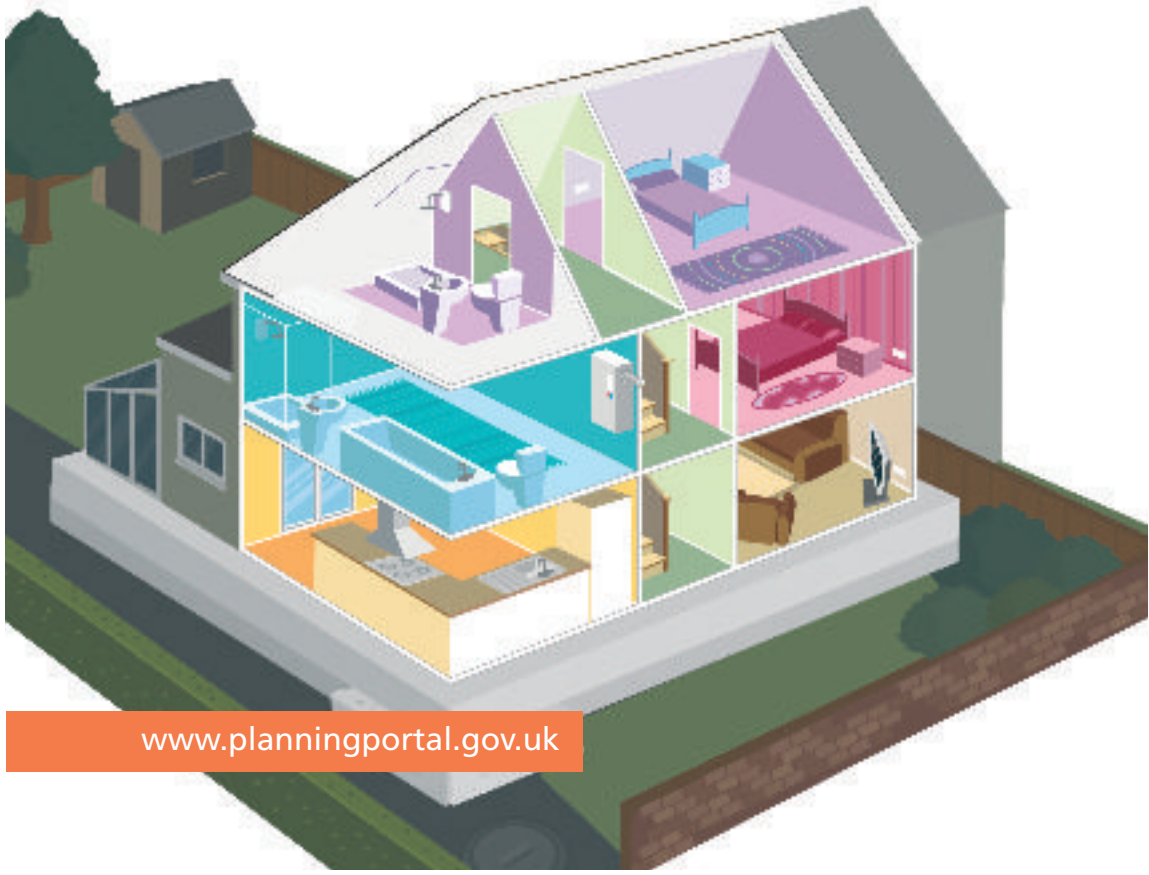


Rules for electrical safety in the home

Read this before you start any electrical work
in your home.

Many electrical jobs in the home – from alteration work
in kitchens and bathrooms to completely rewiring your
house must now be approved by your local council,
unless they are carried out by a registered installer.



Why are there rules for electrical safety in the home?

- To reduce the number of deaths, injuries and fires caused by faulty electrical installations.
- To make it harder for 'cowboy builders' to leave electrical installations in an unsafe condition.

What should I do if I want to do some electrical work?

- See the flow chart to check if you need to tell your Local Authority's Building Control Department before you start the work.

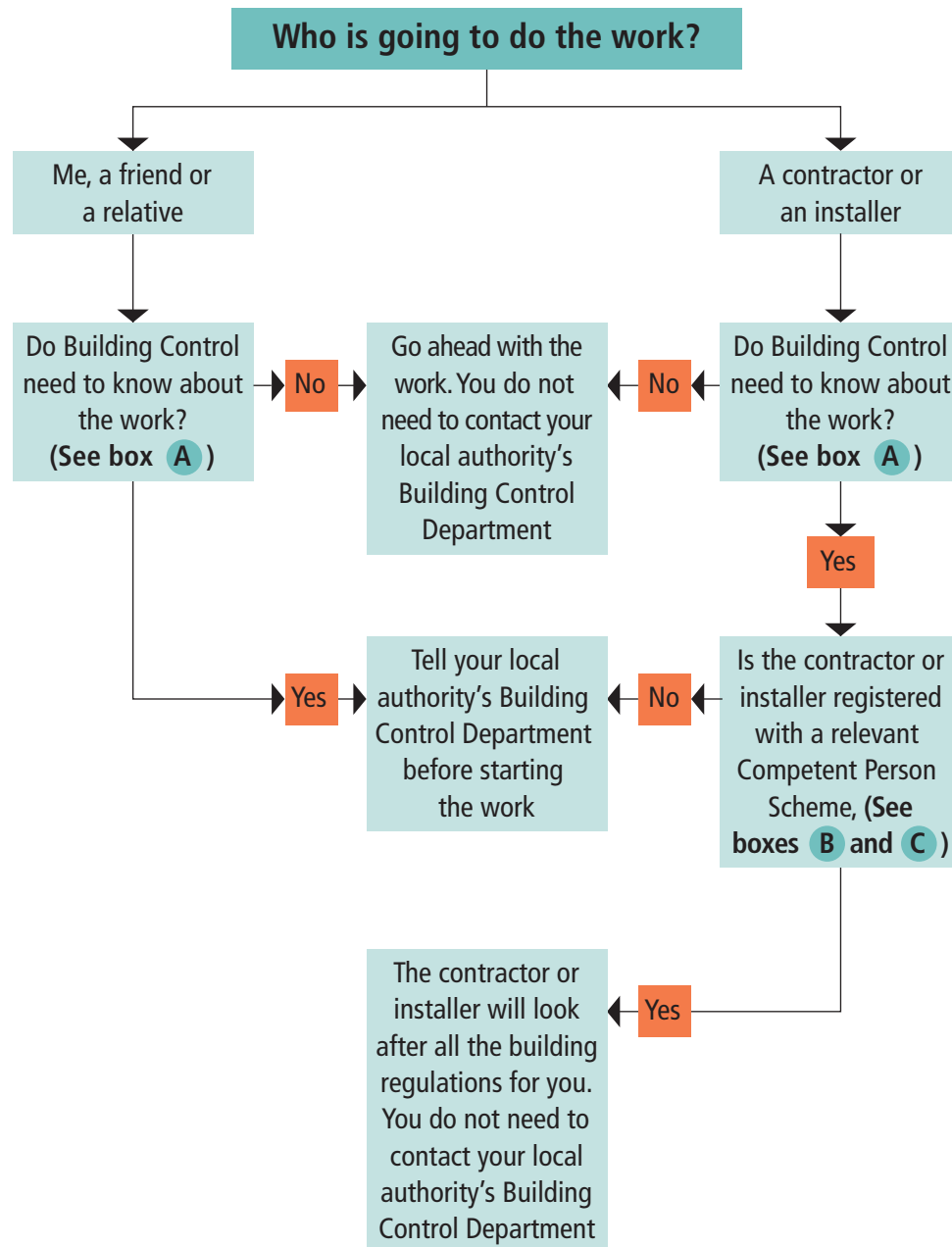
What will happen if I do not follow the Building Regulations?

- The electrical installation might not be safe.
- You will have no record of the work done.
- If any work that has been carried out is found to be faulty, your local authority's Building Control Department may insist you put it right.

Where can I get more information?

- From your local authority's Building Control Department.
- We publish a free 'Explanatory Booklet on the Building Regulations'. Phone **0870 1226 236** or visit **www.communities.gov.uk/explanatory-booklet** for a copy.
- To find a registered installer within a Competent Person Scheme, see **Box C**.

How to meet the electrical safety rules



A You **DO NOT** need to tell your local authority's Building Control Department about:

- repairs, replacements and maintenance work; or
- extra power points or lighting points, or other alterations to existing circuits (except in a kitchen, bathroom, or outdoors).

If you are not sure about this, or you have any questions, ask your local authority's Building Control Department.

All work, whether you need to tell your local authority about it or not, must be done to the standards in the IEE 'wiring regulations'.

B Why should I use an installer who is registered with a Competent Person Scheme?

They are qualified to carry out electrical work in accordance with the electrical safety rules and on completion they will issue you with a certificate of compliance.

They will also deal with all Building Control issues for you.

You will have access to insurance backed warranties and a robust complaints procedure to cover faulty electrical work.

Some registered installers are also members of the TrustMark scheme, which gives additional protection.



For details, visit www.trustmark.org.uk

C How can I find a registered installer in my area or check that an installer is registered?

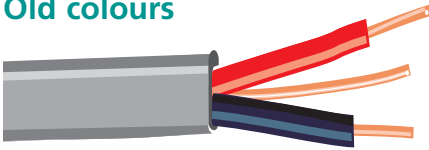
Visit www.competentperson.co.uk and enter your area or the name of the installer in the relevant search box. Or, contact the operators of the Competent Person Scheme directly – their details are over the page.

Important: New colours for mains electricity cables

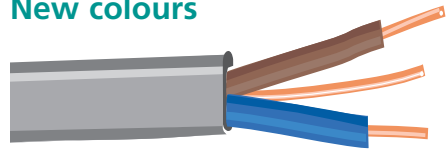
From April 2006, the colours of the live and neutral wires in electrical installation cables have changed from red and black to brown and blue to match the wires in flexible leads to portable appliances.

All new wiring must now be in the new colours.

Old colours



New colours



Authorised Competent Person Schemes

To find a registered installer, visit www.competentperson.co.uk or contact the scheme operators directly.

BRE Certification Ltd incorporating ECA Limited

Phone: 0870 609 6093

Website: www.partp.co.uk

British Standards Institution

Phone: 01442 278535

Website: www.bsi-global.com/electricalinstallers

ELECSA Limited

Phone: 0870 749 0080

Website: www.elecsa.org.uk

NAPIT Registration Limited

Phone: 0870 444 1392

Website: www.napit.org.uk

NICEIC Group Limited

Phone: 0870 013 0382

Website: www.niceic.com

Communities and Local Government Publications
PO Box 236
Wetherby
West Yorkshire
LS23 7NB

Tel: 0870 1226 236

Textphone: 0870 1207 405

Fax: 0870 1226 237

E-mail: communities@twoten.com

Website: www.communities.gov.uk/buildingregs

Published by Communities and Local Government. Crown copyright 2007.
Reprinted in the UK, January 2007, on material containing 75% post-consumer
waste and 25% ECF pulp.

Product code: 04BR02710